

## Warranty

Whilst every Lucent product is manufactured to the highest quality standards, we offer a comprehensive Warranty for complete peace of mind.

### Residential Use

15 Years Replacement products or parts  
10 Years Finish / 5 Years Matte Black  
1 Year Labour

### Commercial Use

5 Years Replacement products or parts  
1 Year Labour

Warranty may become void due to any of the following:

- Inability to provide proof of purchase or equivalent documentation
- Product not installed by a licensed Plumber
- Failure to install product to national standards and state regulations
- Failure to install product in accordance with manufacturers installation instructions
- Fitting of non-approved flow controllers in tap bodies or outlets
- If products are used for outdoor applications.
- Product used for non-potable water applications.
- Damage because of insufficient flushing of lines prior to installation. Service, repairs, or installation of non-Lucent replacement parts undertaken without Lucent's prior written approval.
- Damage to finishes caused by non adherence to cleaning instructions.

## Cleaning Instructions:



CLEAN MICROFIBRE  
CLOTH



SOAPY WATER



PH BALANCE  
SOAP - BASED  
CLEANSER

## Warranty Service

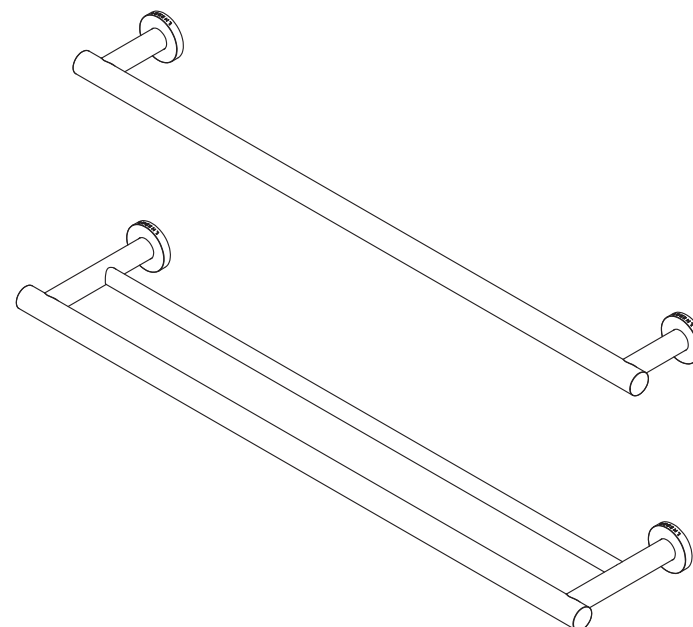
For all warranty service calls please contact your local store.  
Phone: 1300 474 714  
E-mail: [warranty@lucentdesigns.com.au](mailto:warranty@lucentdesigns.com.au)



INS\_1040.pdf rev.1.0

# LUCENT<sup>®</sup>

## Installation and Operating Instructions



### 90907

SINGLE TOWEL RAIL 600MM

### 90908

DOUBLE TOWEL RAIL 600MM

Thank you for purchasing a quality Lucent product. Please note that this product must be installed by a qualified and registered plumber who is compliant with all the relevant regional requirements and who holds current certification.

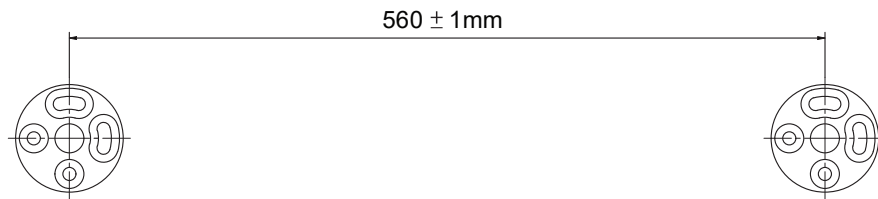
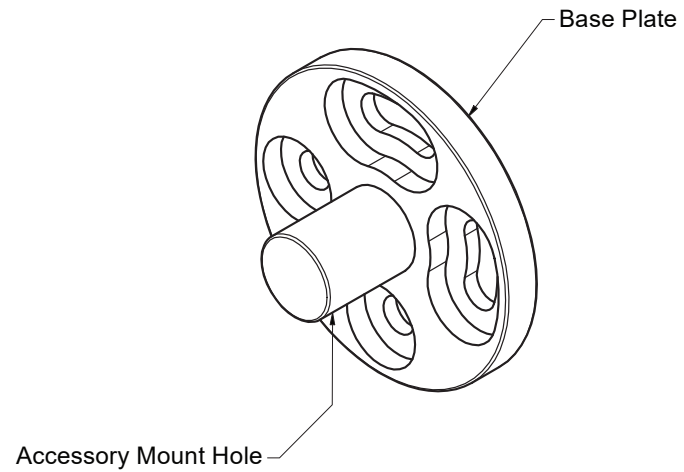
Note: Please read all instructions prior to installation to limit warranty disputes should a claim arise.

## Installation Instructions

Note to Plumber: Please provide this leaflet to the owner after installation.

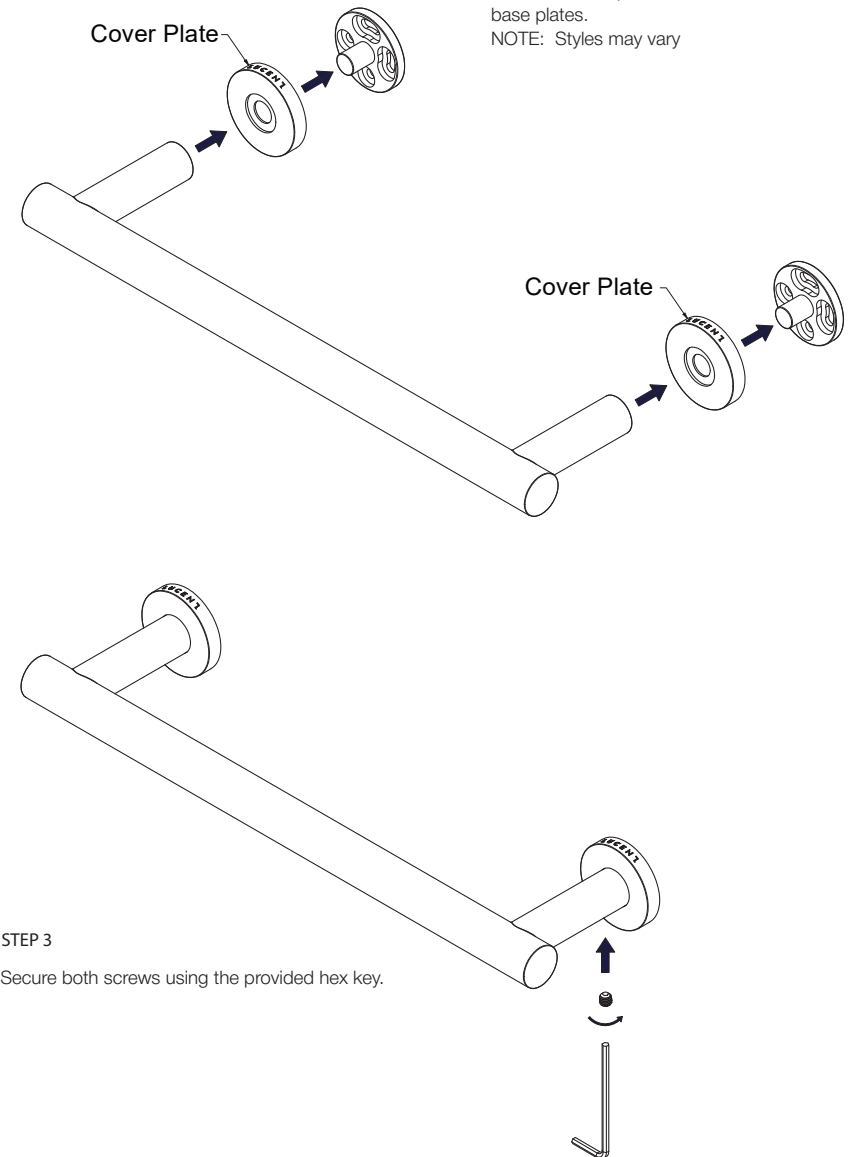
### STEP 1

Ensuring the accessory mount hole is facing the floor, using appropriate hardware, fix the base plate to the wall using the provided measurements.



### STEP 2

Push the cover plates and rail onto the base plates.  
NOTE: Styles may vary



### STEP 3

Secure both screws using the provided hex key.

